

# PERFORMANCE BRIEF

## Pompano Beach Fire Rescue



Release July 17, 2020

This report summarizes call volume trends for Pompano Beach Fire Rescue. Data for reporting periods are compared with comparable times to monitor trends. Note that the analysis is based on preliminary data, and is always subject to change or be revised in the future.

## THE CALL-VOLUME SITUATION

**Year to Date** - From October 2019 to June 2020 Pompano Beach firefighters responded to 21,825 incidents, virtually unchanged (0.8 percent decrease) when compared to the same period a year ago. The total also computes to an average of 80 calls per day. More than half (55.4%) of the incidents required emergency medical transport to a hospital (Table 1).

- The majority of the calls (63%) occurred during the hours of 8:00am and 8:00pm.

**On a quarterly basis**, the percent change in the number of calls for the third quarter (April through June 2020) however decreased 8.8 percent, from 7,355 to a total of 6,705 incidents. This is equivalent to an average 74 incidents per day. The mean was 81 a day during the same time period last year.

- Tuesday and Friday were the busiest days of the week, averaging 77 calls, followed closely by Saturday with 76.
- Zone 52 accounted for nearly half of the 8.8 percent decrease in call volume during the April-June stretch.
- 45.4 percent of the calls (or an average of 33 a day) required transport to a hospital. The share was 55.0 percent a year ago (Table 1).

**Coronavirus (COVID-19) Impact on call volume** – The over-the-quarter change in the third quarter of the fiscal year (-8.8%) mostly reflected the effects of the coronavirus (COVID-19) pandemic and the efforts to contain it. Note also that historically call volume tends to decrease during the summer season.

Table 1. Call Volume

	Year End			Year to Date			Apr-June		
	FY 18	FY 19	% Chg	FY 19	FY 20	% Chg	FY 19	FY 20	% Chg
<b>TOTAL CALLS</b>	30,073	29,337	-2.4%	22,004	21,825	-0.8%	7,355	6,705	-8.8%
Daily Average	82	80		81	80		81	74	
<b>Calls per Day</b>									
Sunday	79	78		77	77		77	70	
Monday	83	80		78	80		84	73	
Tuesday	84	82		82	81		83	77	
Wednesday	84	80		80	77		81	69	
Thursday	80	77		79	80		81	74	
Friday	86	83		82	82		79	77	
Saturday	81	82		83	80		82	76	
<b>Calls by Zone (Daily avg.)</b>									
Zone 11	8	8		8	8		8	7	
Zone 24	13	12		12	12		11	12	
Zone 52	20	19		19	19		20	17	
Zone 61	13	13		13	12		13	11	
Zone 63	18	18		18	18		18	16	
Zone 103	10	10		10	11		10	11	
Zone 12C	> 1	> 1		> 1	> 1		> 1	> 1	
<b>Calls by 4-hour increments</b>									
Midnight-4:00 am	9.9%	10.0%		10.0%	10.1%		10.0%	9.7%	
4:00 am-8:00 am	10.7%	10.4%		10.5%	10.2%		10.6%	9.6%	
8:00 am-Noon	20.4%	20.0%		20.0%	20.3%		20.1%	19.9%	
Noon-4:00 pm	21.8%	22.0%		21.9%	21.3%		22.1%	20.9%	
4:00 pm-8:00 pm	20.9%	21.4%		21.4%	21.2%		21.3%	21.6%	
8:00 pm-Midnight	16.5%	16.3%		16.2%	17.0%		15.9%	18.4%	
<b>EMS TRANSPORTS</b>	16,789	16,265	-3.1%	12,219	11,670	-4.5%	4,043	3,042	-24.8%
% of Total Calls	55.8%	55.4%		55.5%	55.4%		55.0%	45.4%	

Source: Motorola Premier One Database

Chart 1. Call Volume down 8.8% in the 3rd quarter  
*Over-the-quarter percent change*

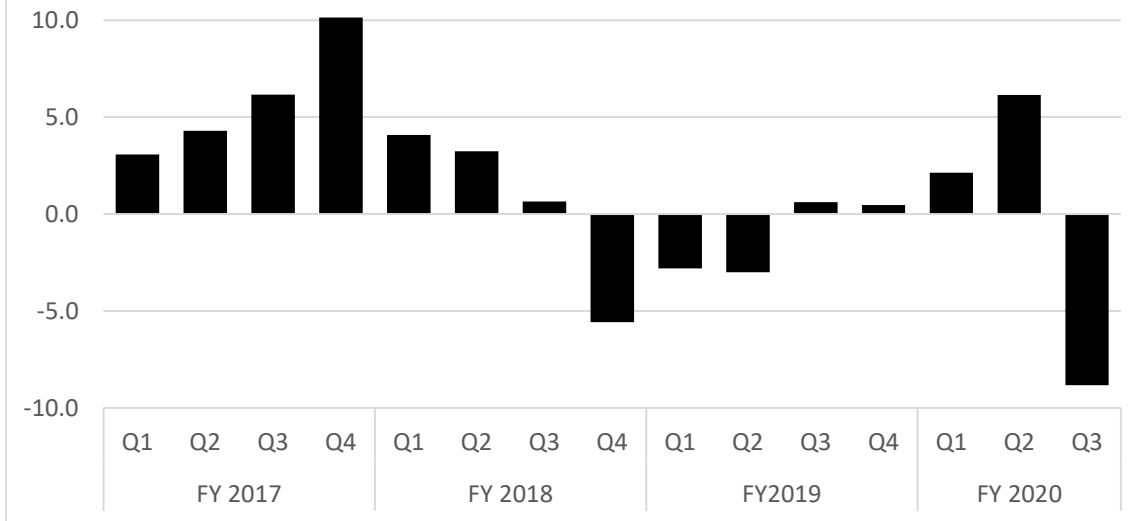


Chart 2. EMS Transport down 24.8% in the 3rd quarter  
*Over-the-quarter percent change*

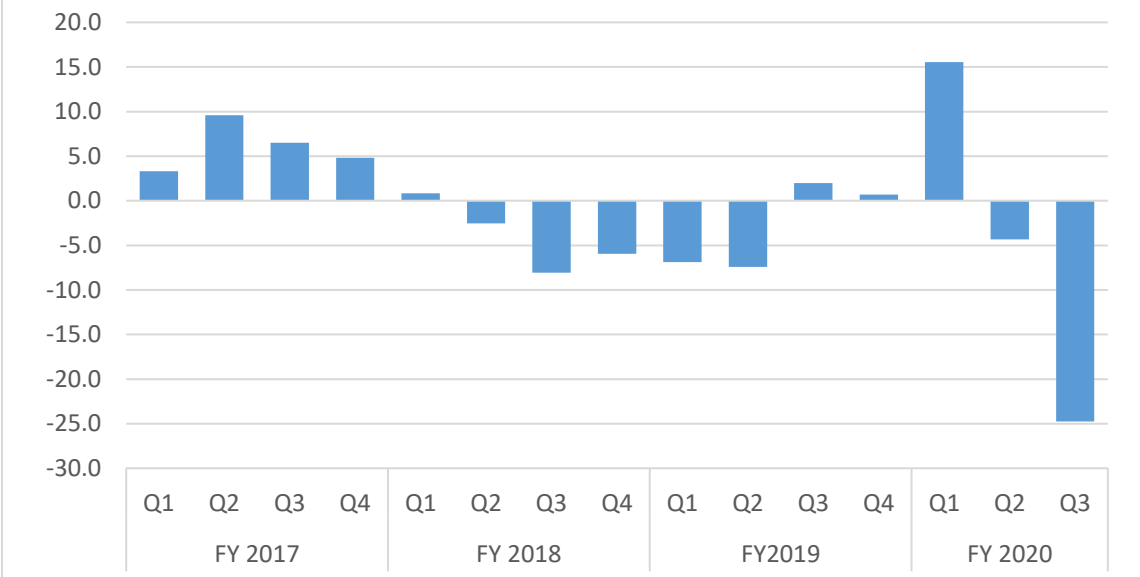


Chart 3. Calls and EMS Transports, Daily Average

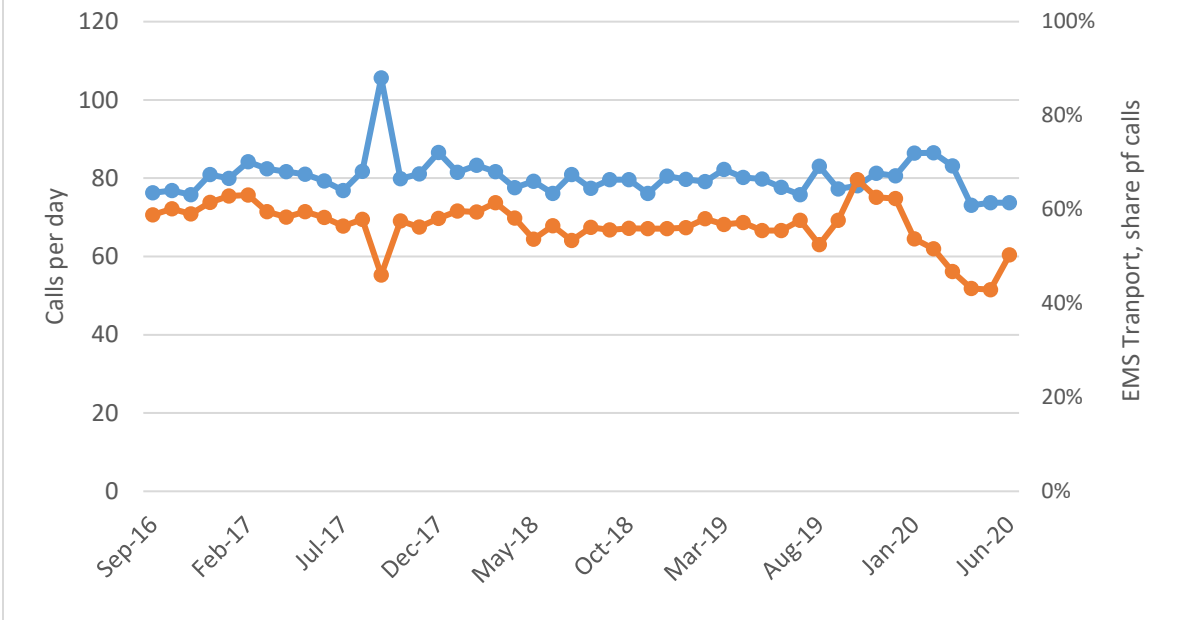


Chart 4. Relationship between EMS Transports and Total Calls

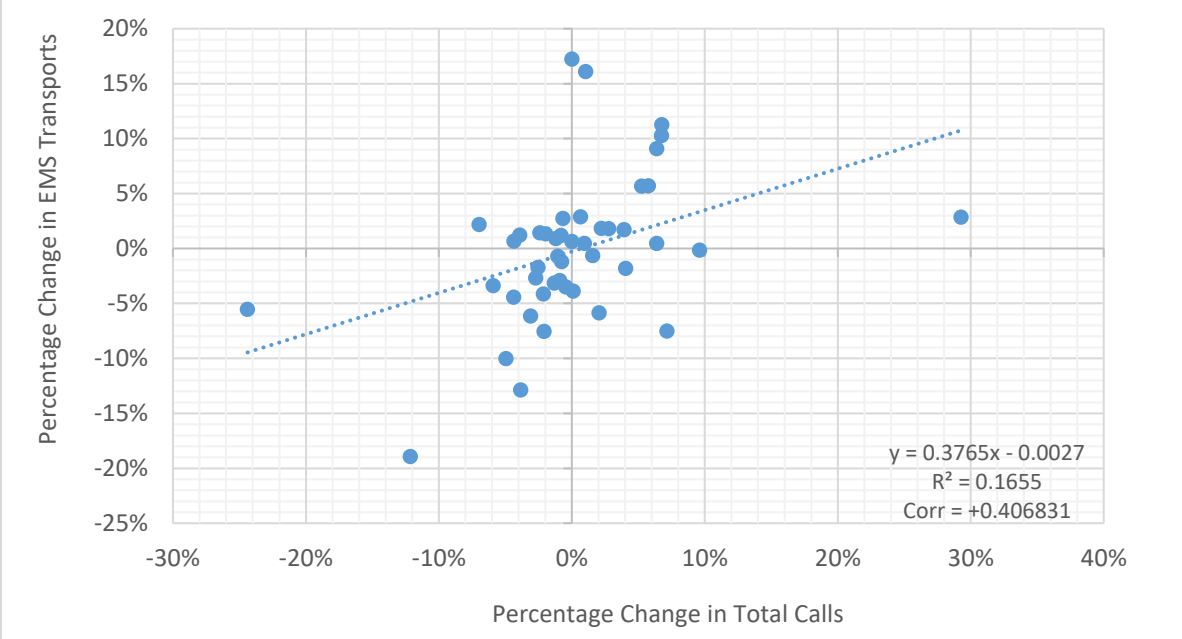


Chart 5. Calls by Hour of Day  
April through June

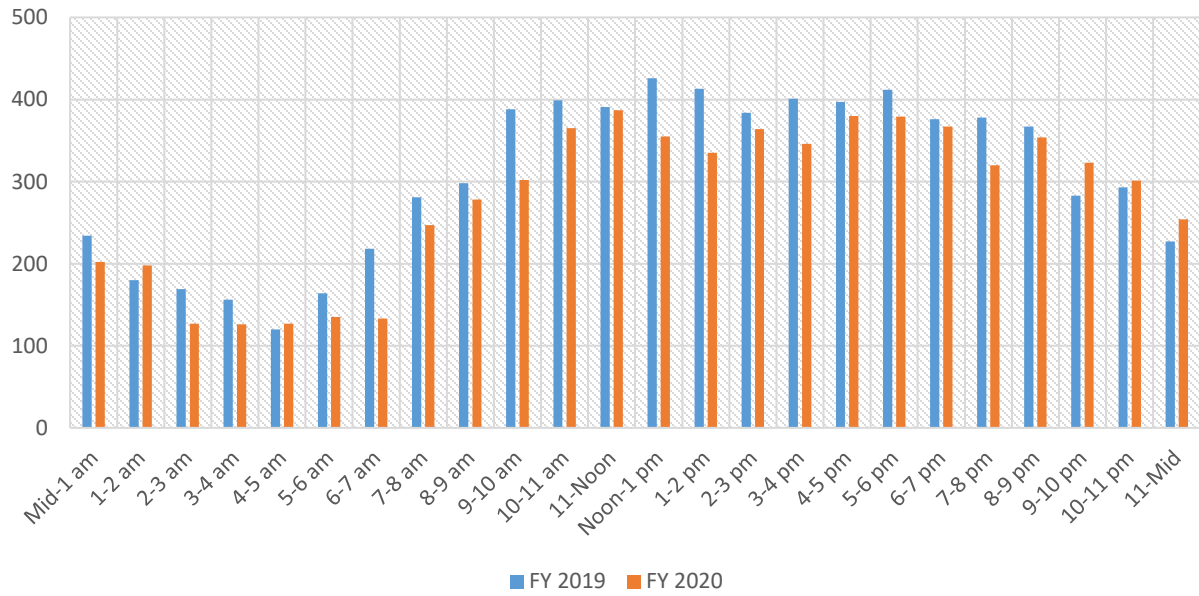
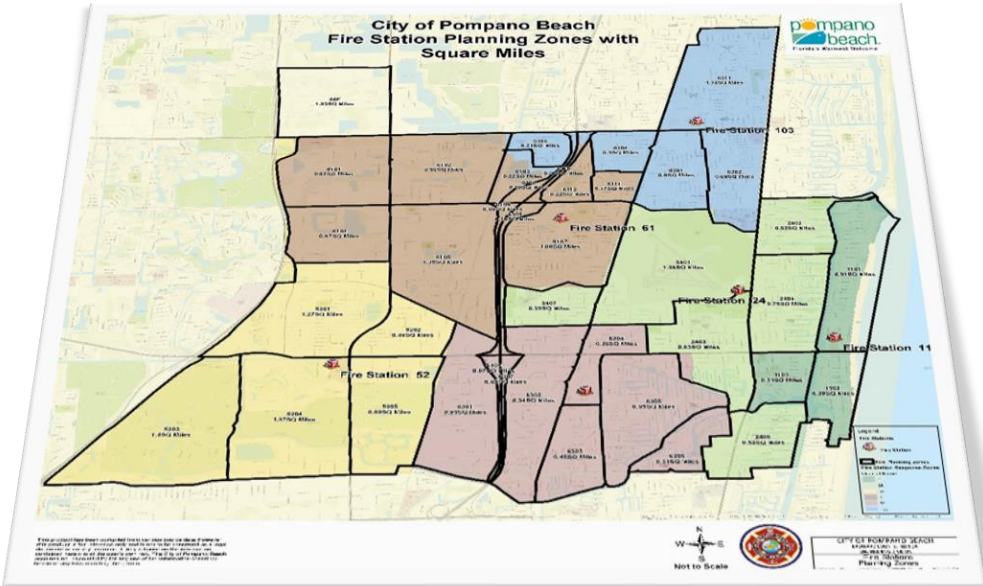
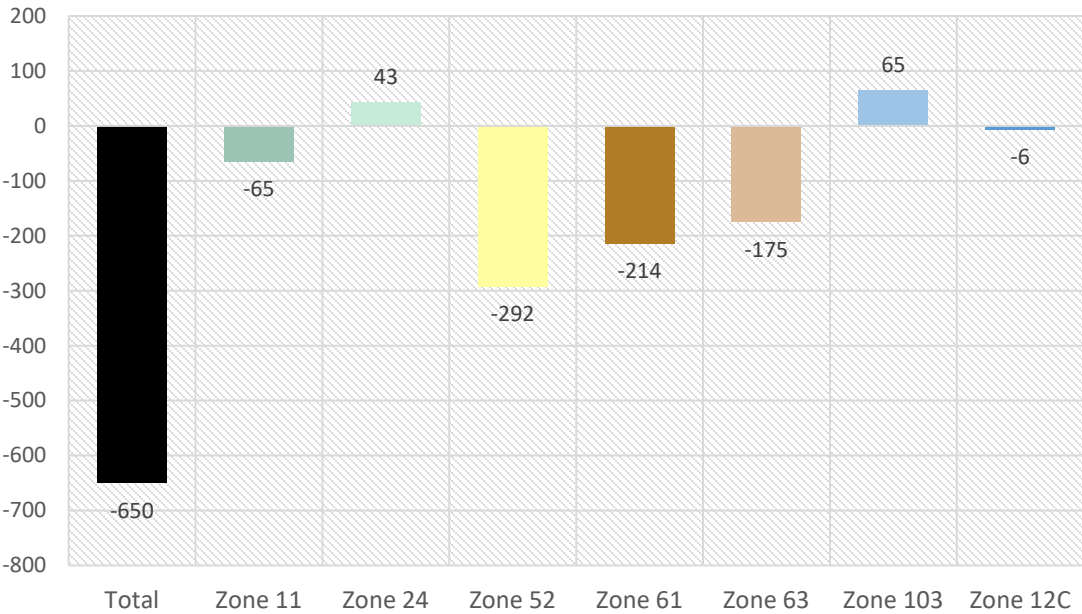
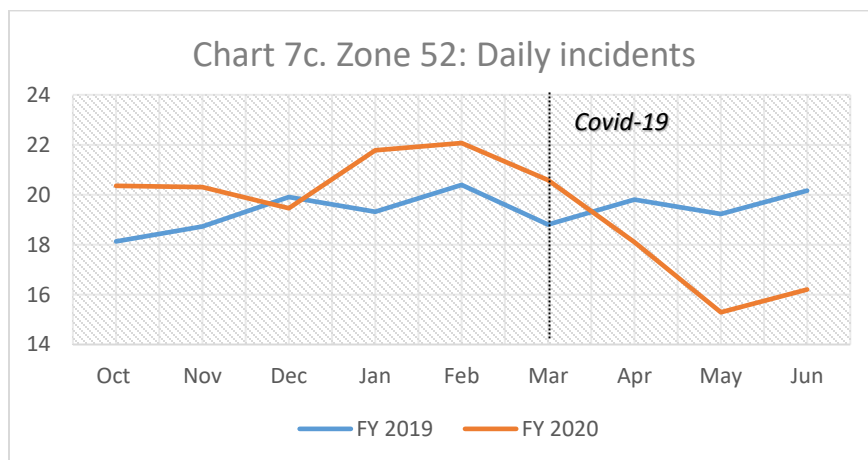
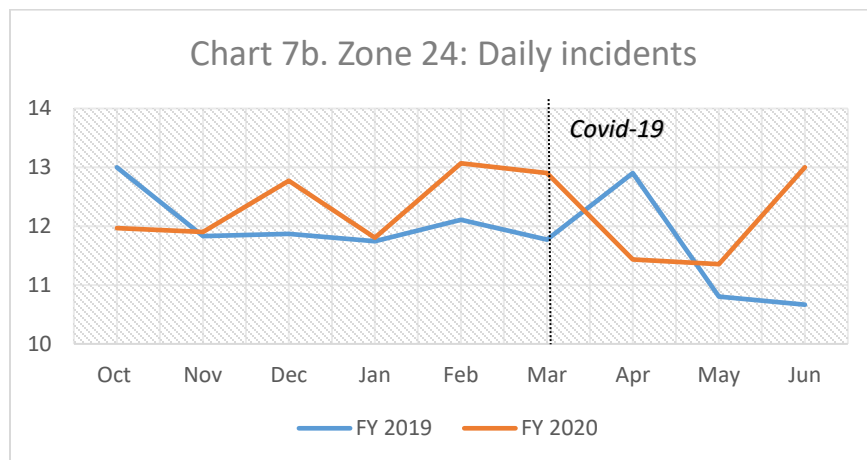
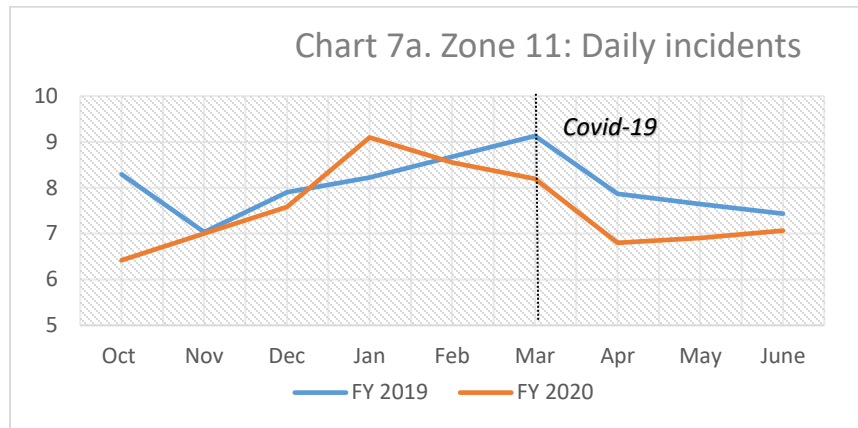


Chart 6. Changes in call volume and calls by zone  
Over-the-third quarter change



# Daily Incidents by Zone



## Daily Incidents by Zone (Cont.)

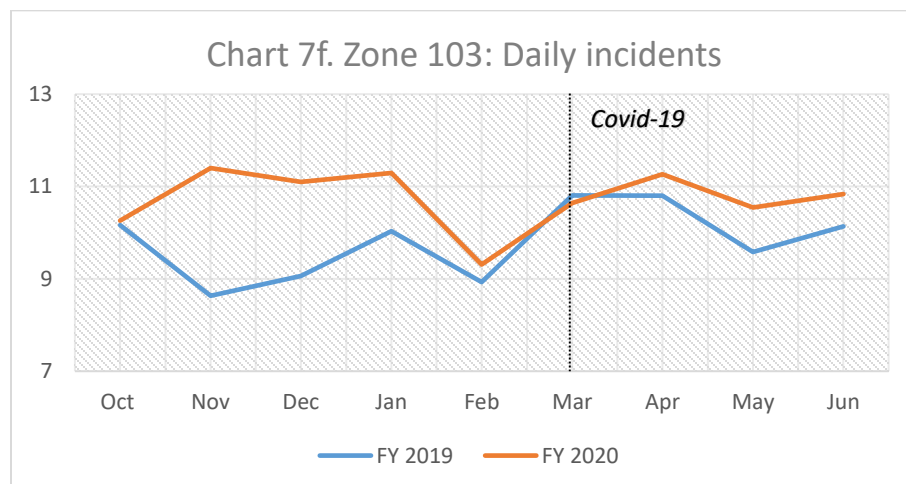
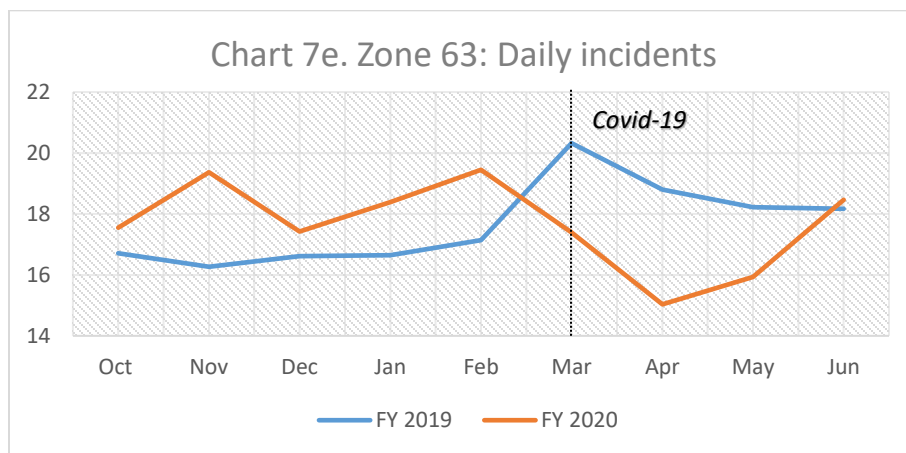
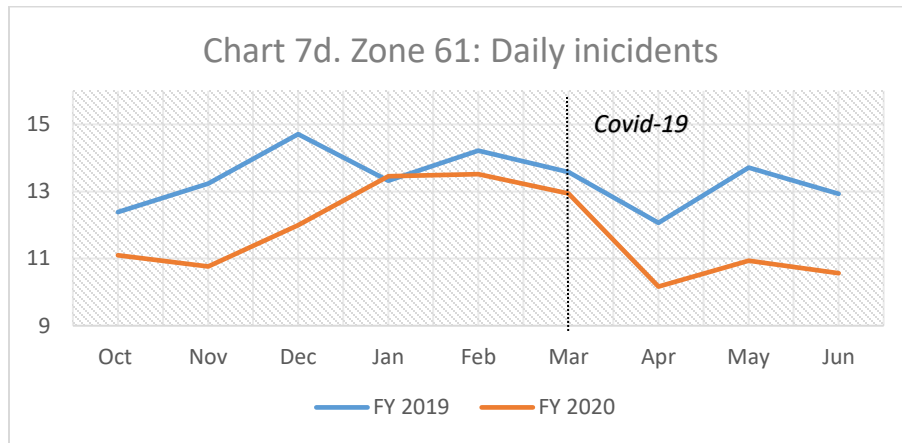




Table 2. Incidents by Call Type

INCIDENT TYPE	April - June		
	FY 2019	FY 2020	
	COUNTS		CHANGE
ABDOMINAL PAIN	161	129	-32
ACCIDENT HIGHWAY	64	59	-5
ACCIDENT OPEN WATER	1	3	2
ACCIDENT ROLLOVER OR EXTRICATION	31	28	-3
ACCIDENT WITH INJURIES	374	279	-95
ACTIVE ASSAILANT	1		-1
AIRCRAFT ALERT 1	1		-1
AIRCRAFT ALERT 2		1	1
AIRCRAFT ALERT 3	1		-1
ALLERGIC REACTION	40	22	-18
ANIMAL BITE	13	7	-6
ANY FIRE NOT OTHERWISE CATEGORIZED	8	13	5
ASSAULT	158	112	-46
BACK PAIN	49	39	-10
BOAT MARINE - FIRE (INLAND/COASTAL)	2	1	-1
BOAT MARINE ACCIDENT	1	3	2
BOAT MARINE FIRE	3	1	-2
BURN	98	6	-92
CARDIAC/RESPIRATORY ARREST	373	134	-239
CHEST PAINS NON-TRAUMATIC	12	199	187
CHILD/ELDERLY ABUSE/ABANDONMENT/NEGLECT	21	1	-20
CHOKING	1	17	16
COMMERCIAL STRUCTURE FIRE	16	22	6
CONFINED SPACE/STRUCTURE COLLAPSE	91	1	-90
DEAD PERSON	94	26	-68
DIABETIC	4	63	59
DOMESTIC DISTURBANCE	29	95	66
DROWNING	1	3	2
ELECTRICAL UTILITY FIRE	121	42	-79
ELECTROCUTION	3	2	-1
ELEVATOR RESCUE	10	81	71
EXPLOSION	2	3	1
EXPOSURE HEAT OR COLD	8	4	-4
EXTRICATION/ENTRAPPED (MACHINERY - NON MVA)	2		-2
EYE INJURY	8	10	2
FALL INJURY	636	527	-109
FALL NO INJURY	82	84	2
FIGHT	33	54	21
FIRE ALARM	66	76	10
FIRE ALARM - COMMERCIAL STRUCTURE	292	325	33
FIRE ALARM - HIGH LIFE HAZARD	23	33	10
FIRE ALARM - HIGH RISE	17	17	0

Table 2. Incidents by Call Type (Cont.)

	April - June		
	FY 2019	FY 2020	
	COUNTS		CHANGE
<i>FIRE ALARM - MULTI-FAMILY</i>	33	44	11
<i>FIRE ALARM - RESIDENTIAL</i>	52	51	-1
<i>FIRE INVESTIGATION</i>	12	10	-2
<i>FIRE OR MEDICAL SERVICE CALL</i>	233	267	34
<i>FUEL SPILL/FUEL ODOR INLAND/COASTAL</i>	5	2	-3
<i>FUEL SPILL/FUEL ODOR LAND</i>	14	2	-12
<i>GAS LEAK/GAS ODOR</i>	5	6	1
<i>HAZ-MAT INCIDENT</i>	31	2	-29
<i>HEADACHE</i>	85	6	-79
<i>HEART PROBLEMS</i>	1	64	63
<i>HEMORRHAGE OR LACERATION</i>	141	124	-17
<i>HIGH HAZARD STRUCTURE FIRE</i>	1	6	5
<i>HIGH RISE FIRE</i>	36	3	-33
<i>HIT AND RUN WITH INJURIES</i>	113	29	-84
<i>INFECTIOUS DISEASE ALPHA LEVEL</i>	1	240	239
<i>INFECTIOUS DISEASE CHARLIE LEVEL</i>	1	317	316
<i>INFECTIOUS DISEASE CHARLIE LEVEL REFERRAL</i>	1	1	0
<i>INFECTIOUS DISEASE DELTA LEVEL</i>	112	145	33
<i>INJURY</i>	84	86	2
<i>MEDICAL ALARM</i>	1	97	96
<i>MENTAL ILLNESS</i>	7	77	70
<i>MULTIFAMILY STRUCTURE FIRE (GREATER THAN 5 UNITS)</i>	5	11	6
<i>OBSTETRICAL/PREGNANCY/CHILDBIRTH/MISCARRIAGE</i>	39	31	-8
<i>ODOR (STRANGE/UNKNOWN)</i>	4	7	3
<i>OPEN WATER BOAT MARINE ACCIDENT</i>	1	8	7
<i>OPEN WATER DROWNING</i>	5	8	3
<i>OPEN WATER SICK PERSON</i>	4	1	-3
<i>OUTSIDE FIRE</i>	30	29	-1
<i>OVERDOSE OR POISONING</i>	176	239	63
<i>RESIDENTIAL FIRE</i>	24	26	2
<i>ROBBERY-PERSONAL/BUSINESS</i>	11	9	-2
<i>SEIZURE</i>	225	202	-23
<i>SEXUAL BATTERY</i>	5	4	-1
<i>SHOOTING</i>	14	27	13
<i>SICK PERSON</i>	912	428	-484
<i>SMOKE INVESTIGATION</i>	9	8	-1
<i>STABBING</i>	9	15	6
<i>STROKE</i>	104	108	4
<i>SUICIDE ATTEMPT</i>	44	45	1
<i>SUICIDE THREAT</i>	94	107	13
<i>SUSPICIOUS INCIDENT/PACKAGE</i>	45	35	-10
<i>TEST INCIDENT - DO NOT DISPATCH</i>	11	33	22
<i>TRAFFIC ACCIDENT STANDBY</i>	51	28	-23
<i>TROUBLE BREATHING</i>	643	423	-220
<i>UNCONSCIOUS OR FAINTING</i>	688	429	-259

Table 2. Incidents by Call Type (Cont.)

	<i>April - June</i>		
	<b>FY 2019</b>	<b>FY 2020</b>	
	<b>COUNTS</b>		<b>CHANGE</b>
<i>UNKNOWN MEDICAL</i>	248	310	62
<i>VEHICLE FIRE</i>	39	32	-7
<i>VEHICLE FIRE (COMMERCIAL-TANKERS, SEMI-TRUCKS)</i>	4	1	-3
<i>WATER RESCUE</i>	1		-1
<i>Total</i>	7,365	6,705	