

Project 19357 McNab Rd and Bridge Improvements

Prime Consultant:

Kimley»Horn

CMAR:

BURKHARDT
CONSTRUCTION, INC.

City of Pompano Beach

GO BOND DIRECTOR: FERNAND THONY, PE

PROJECT MANAGER: FERNAND THONY, PE

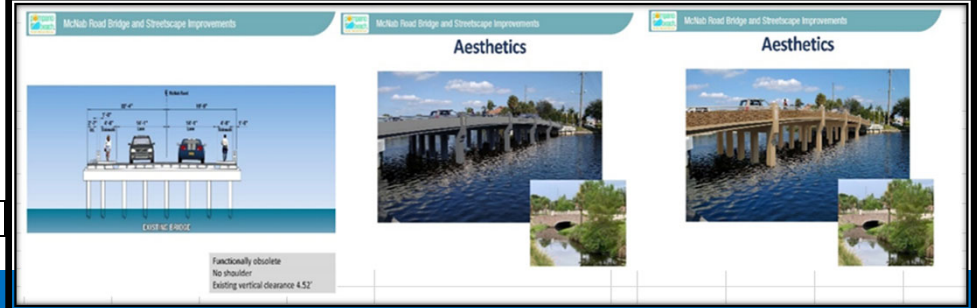
CURRENT PHASE: SCHEMATICS & CONSTRUCTION DOCS

DESIGN TEAM: KIMLEY HORN

CONSTRUCTION TEAM: BURKHARDT

APPROVED BUDGET: \$12,131,875.00

PROJECT PHOTOS



PROJECT OBJECTIVES

The project main objectives include replacing the existing functionally obsolete bridge over C-14 on McNab Road and beautifying McNab Road corridor between Federal Highway and South Cypress Creek Road. The project will modernize the area by laying new paving, related drainage improvements, ADA sidewalks, street and pedestrian lighting, landscaping, bus shelters/benches and street furnishings.

PROJECT UPDATES

- 60% CD Roadway plans have been completed
- Bridge design is resuming, with updated schematic plans
- Phased construction is planned to maintain limited traffic
- Perform value engineering to comply with Go Bond budget
- Bridge will be raised 4 feet



PROJECT SCHEDULE MILESTONES

*** Schedule has been extended due to bridge scope change

DESIGN PHASE: Begins May 2019 Ends: July 2021
There are 5 phases before starting construction.

1. Concept Phase
2. Schematic Phase (Bridge)
3. Design Development Phase
4. Construction Documents (Roadway)
5. Permitting for Construction

CONSTRUCTION PHASE: Start date: (Varied) End date: **31-Aug-24**

PROJECT SITE LOCATION



McNab Road Bridge and Streetscape Improvements	McNab Road Bridge and Streetscape Improvements	McNab Road Bridge and Streetscape Improvements
Design Considerations <ul style="list-style-type: none"> Bridge Geometry Aesthetics Traffic control Resident and Business Access Utilities Environmental Permitting Pedestrian Accommodations Construction Operations Landscaping 	Bridge Structure <p>Functionally Obsolete Structurally Deficient</p>	"Best-Fit" alternative <p>Permitting requirements Water Control (1) = 2.83' Required clearance = 9' Clearance change = 1.23' at channel Roadway grades = 5% max. (2.6%) Driveway grades = 15% Sidewalk width = 6' SID = 305'</p>