



FALL GUIDE

20
23

PARKS AND RECREATION QUARTERLY

IT STARTS IN PARKS





Hello Pompano Beach Community!

Fall is here and we look forward to spending the Holiday season with you all!

As the kids head back to school, remember the Parks & Recreation Department offers activities for your little ones, like Afterschool Programs and Fall Day Camps - check out our Camps & Youth Activities page for more details.

We have a very busy season ahead with some exciting family friendly programs and events, all within your reach!

Did you know the Parks and Recreation team has nearly 100 events, sports programs, and classes scheduled for you this Fall? Whatever your pleasure, we have it for you!

We are happy to provide multiple adaptive programs and activities within the City, such as Adaptive Tennis, a special Holiday Singo and Adaptive Kickball classes.

You will be excited to know that our fan favorite events are back for another season of fun, with Music Under the Stars and Food Truck Frenzy. Not to mention, various sports programs, and over 20 exercise and art classes.

Join us at this year's signature events, including Caribbean Fest, Boo Bash, Yuletide on Atlantic, and our first-ever Holiday Tree Lighting on the Beach during the December Music Under the Stars concert!

Don't forget to follow us on Instagram and Facebook for news on our upcoming events and programs @pompanobeachparks. For a complete catalog on everything we offer, take a look at our redesigned website parks.pompanobeachfl.gov.

Warm Regards,

Mark Beaudreau

Mark Beaudreau





PARKS AND RECREATION DEPARTMENT

1801 NE 6 Street
Pompano Beach, FL 33060

954.786.4111



Discounts

Multi-family discounts will be applied to all city-sponsored youth programs. The first child will pay the full program fee. All other children residing in the same household will receive a 10% discount on their program fee. Siblings must be registered in the same program to receive the discount. A 20% **military discount** on all department facility rentals, memberships and recreation programs. A 20% **Senior Citizens discount** (55+) on all department facility rentals, memberships and recreation programs. Identification and proof of Pompano Beach residency are required.

Refund Policy

Full refunds will only be made for programs/classes canceled by the Parks and Recreation Department. If you request a refund due to a personal reason, a \$15 processing fee will be deducted from the program/class fee paid. Registration and application fees are non-refundable.




**SIGN
UP
FOR
TEXTS
TODAY!**

Connecting our community by providing affordable and diverse programming, social opportunities, events, and exceptional parks and recreation facilities.

EVENTS

For additional event details, visit:
parks.pompanobeachfl.gov



[OCTOBER]

Music Under the Stars

October 13 | 7-9pm
FREE | Melinda Elena Band
Pompano Beach Great Lawn
954-786-4111

Pompano Beach Caribbean Fest

October 14 | 5-10pm | FREE
Community Park
954-786-4111

Food Truck Frenzy

October 20 | 6-10pm
FREE | Food, Fun and Music
Sample McDougald House
954-786-4111

Boo Bash

October 27 | 5-9pm | FREE
Community Park
954-786-4111

Trunk or Treat

October 30 | 10am | FREE
E. Pat Larkins Center
954-786-4585

HalloSCREAM

Oct 31 | 6 - 8pm | FREE
McNair Center
954-786-7882

[NOVEMBER]

Music Under the Stars

November 10 | 7-9pm
FREE | Steel House
Pompano Beach Great Lawn
954-786-4111

Drone Show

Extravaganza
November 11 | 7pm & 9pm
FREE
Fisher Family Pier
954-786-4111

Seniors Thanksgiving Luncheon

November 16 | 10am
\$10/per person
E. Pat Larkins Center
954-786-4585

Food Truck Frenzy

Nov 17 | 6-10pm
FREE | Food, Fun and Music
Sample McDougald House
954-786-4111

[DECEMBER]

Outdoor Flea Market

Saturday, Dec 2
9am-1pm | FREE
Charlotte Burrie Center
954-786-5566

Yuletide Parade

December 7 | 6:30pm | FREE
Atlantic Blvd.
954-786-4111

Music Under the Stars
Holiday Special with
Tree Lighting

December 8 | 6pm
FREE | Retro Radio Band
Pompano Beach Great Lawn
954-786-4111

Breakfast with Santa

December 9 | 9-11am
\$7/per person | 3 & under are FREE
Emma Lou Olson Civic Center
954-786-4111

BSO Christmas
Extravaganza

December 13 – 15 | 10am | FREE
E. Pat Larkins Center
954-786-4585

Pop the Trunk Toy Drive

December 17 | 3pm | FREE
Limited Toys Available.
McNair Center
954-786-7882

Food Truck Frenzy

December 22 | 6-10pm
FREE | Food, Fun and Music
Sample McDougald House
954-786-4111

Holiday Dance
Party Show

With Scott Barreto
Vocalist-Tribute Artist
December 16 | 6pm
\$10 | Reservations suggested!
E. Pat Larkins Center
954-786-4585

[RECURRING]

Community Bingo

Oct 4 & 18 | Nov 8 & 22 | Dec 6
6pm | FREE
E. Pat Larkins Center
954-786-4585

Community Game Night

Oct 26 | Nov 21
6pm | FREE
E. Pat Larkins Center
954-786-4585

Farmer's Market

Tuesdays | 10am-3pm
Fresh fruits, vegetables, BBQ &
street foods.
Herb Skolnick Center
954-786-4590

Movie Night

Oct 12 | Nov 30 | Dec 28
6pm | FREE
E. Pat Larkins Center
954-786-4585

Thursday Night Vibes

1st Thursday | 6-9pm
\$5/per person
Dance the night away to the
sounds of Motown, Disco, Oldies
Rock, 50's-70's
Herb Skolnick Center
954-786-4590

Oldies Music Bingo

2nd Thursday | 6pm
\$5/per person
Prizes for winners.
Herb Skolnick Center
954-786-4590

Pizza & Movie Night

4th Thursday | 6pm
\$5/per person
Herb Skolnick Center
954-786-4590

PAVILION & FACILITY RENTALS

954.786.4111
parks.pompanobeachfl.gov



FACILITY HOURS: Community Centers:

- Emma Lou Olson Civic Center
- E. Pat Larkins Community Center
- Charlotte Burrie Center
- Herb Skolnick Center

Monday - Thursday
8:30 am - 9 pm

Friday
8:30 am - 5 pm,
**Emma Lou 6pm

Saturday
8 am - 4 pm

Sunday
Closed

Recreation Centers:

- Highlands Center
- Mitchell Moore Center
- McNair Center

Monday - Thursday
12 pm - 9 pm

Friday
9 am - 6 pm

Saturday
8 am - 4 pm

Sunday Closed



Pavilion Rentals

The City of Pompano Beach offers pavilion rentals at many park locations, including the beach! Residents will receive a discount when they provide a valid Driver's License and recent utility bill with Pompano Beach address.

**Bounce Houses allowed with pavilion permit at specific parks. Call for details.*

For more information on Pavilion locations and availability, please call 954.786.4111 or visit parks.pompanobeachfl.gov.

Residents: \$75/day

Non Residents: \$135/day

**Plus tax*

Application fee*: \$25

**Applied to all transactions.*

Additional Facility Rental Fees

Refundable Deposit: \$200

Application Fee: \$25

Kitchen Fee: \$50

Personnel Fee*: \$25

Set-Up/Break-Down Fee: . . \$50

Gym Floor Covering: \$100

**Applied if rental hours are outside the facilities normal hours of operation.*

Beach Wedding Permits

Application Fee: \$25

Rental Fee: \$125

Applications available on parks website. For further info, call 954.786.4111

Resident Facility Rental

Individual

Auditorium/Gym: . . .	\$200/3 hours
.....	\$40/each additional hour
Banquet Rooms: . . .	\$175/3 hours
.....	\$20/each additional hour
Other Rooms:	\$150/3 hours
.....	\$15/each additional hour
Sunday/Any Room: . .	\$300/3 hours
.....	\$75/each additional hour

Non-Profit/Fundraising

Auditorium/Gym: . . .	\$251/3 hours
.....	\$50 ²⁵ /each additional hour
Banquet Rooms: . . .	\$200 ⁵⁰ /3 hours
.....	\$25/each additional hour
Other Rooms:	\$165.25/3 hours
.....	\$15/each additional hour
Sunday/Any Room: . .	\$350/3 hours
.....	\$65 ⁵⁰ /each additional hour

Non-Profit/No Admission

Auditorium/Gym: . . .	\$165/3 hours
.....	\$15/each additional hour
Banquet Rooms: . . .	\$150/3 hours
.....	\$15/each additional hour
Other Rooms:	\$50/3 hours
.....	\$10/each additional hour
Sunday/Any Room: . .	\$150/3 hours
.....	\$30/each additional hour

For-Profit/Admission

Auditorium/Gym: . . .	\$500/3 hours
.....	\$100 ²⁵ /each additional hour
Banquet Rooms: . . .	\$400/3 hours
.....	\$75 ²⁵ /each additional hour
Other Rooms:	\$300/3 hours
.....	\$50 ²⁵ /each additional hour
Sunday/Any Room: . .	\$700/3 hours
.....	\$110/each additional hour

For-Profit/No Admission

Auditorium/Gym: . . .	\$210/3 hours
.....	\$65/each additional hour
Banquet Rooms: . . .	\$150/3 hours
.....	\$60/each additional hour
Other Rooms:	\$80/3 hours
.....	\$30/each additional hour
Sunday/Any Room: . .	\$450/3 hours
.....	\$45/each additional hour

Non Resident Facility Rental

Individual

Auditorium/Gym: . . .	\$400/3 hours
.....	\$80/each additional hour
Banquet Rooms: . . .	\$350/3 hours
.....	\$40/each additional hour
Other Rooms:	\$300/3 hours
.....	\$30/each additional hour
Sunday/Any Room: . .	\$600/3 hours
.....	\$150/each additional hour

Non-Profit/Fundraising

Auditorium/Gym: . . .	\$500 ⁵⁰ /3 hours
.....	\$100/each additional hour
Banquet Rooms: . . .	\$400/3 hours
.....	\$50 ⁵⁰ /each additional hour
Other Rooms:	\$351/3 hours
.....	\$40 ²⁵ /each additional hour
Sunday/Any Room: . .	\$675 ⁵⁰ /3 hours
.....	\$150/each additional hour

Non-Profit/No Admission

Auditorium/Gym: . . .	\$300/3 hours
.....	\$50/each additional hour
Banquet Rooms: . . .	\$275/3 hours
.....	\$30/each additional hour
Other Rooms:	\$150/3 hours
.....	\$30/each additional hour
Sunday/Any Room: . .	\$300/3 hours
.....	\$50/each additional hour

For-Profit/Admission

Auditorium/Gym: . . .	\$1,100/3 hours
.....	\$200/each additional hour
Banquet Rooms: . . .	\$1,000/3 hours
.....	\$145/each additional hour
Other Rooms:	\$900/3 hours
.....	\$150/each additional hour
Sunday/Any Room: . .	\$1,300/3 hours
.....	\$350/each additional hour

For-Profit/No Admission

Auditorium/Gym: . . .	\$675/3 hours
.....	\$140/each additional hour
Banquet Rooms: . . .	\$480/3 hours
.....	\$120/each additional hour
Other Rooms:	\$425/3 hours
.....	\$90/each additional hour
Sunday/Any Room: . .	\$1,200/3 hours
.....	\$150/each additional hour

ATHLETICS

Registration:

Emma Lou Olson Civic Center,
1801 NE 6 Street
(unless otherwise specified)

954.786.4111



Winter Sports

Registration begins
in January!

Call 954-786-4119

COED Youth Basketball

Registration opens Dec 4

Season starts Jan 8

Mon - Thur | 6 - 8pm

\$25/Residents | \$50/Non Residents

McNair Center

954-786-7882

COED Youth Soccer

Weekdays

Registration: Sept 18-Nov 1

Season: Nov 1 - Feb 15

Mon-Thurs | 6-8:30pm

Ages 5-6, 7-9, 10-12, 13-14

\$25/Residents | \$50/Non Residents

Youth Sports Complex, 4 Fields

Community Park

954-786-4119

Nov 1 - Feb 15

Age 5-6, Age 7-9

\$25/Residents | \$50/Non Residents

McNair Center

954-786-7822

SATURDAY

Registration: Sept 18-Nov 1

Season: Nov 4-Feb 17

Saturdays | 9am-1pm

Ages 7-9, 10-12, 13-14

\$25/Residents | \$50/Non Residents

Youth Sports Complex

954-786-4119

Palm Aire Run Club

Run approximately 3 miles

18 & Up | FREE

Wed | 7pm

Herb Skolnick Center

PBFC Hammerheads Youth Soccer

Ages 6-17

Mon - Fri | 6 - 8pm

Community Park

954-941-4038

Pee Wee Basketball

Tuesday and Thursday

Ages: 3-4 | \$25 /Residents

\$50/Non Residents

Registration starts: Dec 11

Program Starts: Jan. 23rd

6 week program

Tues and Thur | 6 - 7pm

North Pompano Park

954-786-7871

Tues | 6 - 7pm

McNair Park

954-786-7882

Pee Wee Soccer

Tues & Thurs

Ages: 3-4 | \$25/Residents

\$50/Non Residents

Registration starts: Oct. 16

Program Starts: Nov. 28

6 week program

Tues and Thurs | 6 - 7pm

North Pompano Park

954-786-7871

Pompano Beach Bocce Club

18 & Up | FREE

Day and Time: TBD

George Brummer Park

954-829-7902

Pompano Beach Riptide Girls Softball

8u, 10u, 16u

Mon, Wed | 6-8pm

Community Park

954-650-3822

Youth Group Tennis Lessons

Ages 6-17 | FREE

Mon-Fri | 11am-6pm

\$85/ 1x (2hr class)

\$230/ 3x (2hr class)

George Brummer Park

727-247-6106

Run It Sports Track & Field

Registration opens Oct 2

Ages 4-17 | 6:30 - 7:45pm

Season starts Dec 4

Mon, Wed and Thur

\$100/participant

McNair Park Track

954-899-9665



CAMPS & YOUTH ACTIVITIES



Afterschool Program

School Year 2023-2024

Grades K-5

\$50/ Resident \$90/ Non Resident

Registration Fees:

\$25/Resident \$50/Non Resident

2pm to 6pm

Highlands Park

McNair Center

Emma Lou Olson Center

Mitchell/Moore Center

Kids Day Off

Oct. 24th, Nov. 7th, 20th,
21st & 22nd

Grades K-5th | 7:30am-6pm

\$15/Resident per day

\$25/Non Resident per day

Emma Lou Olson

Highlands

Mitchell/Moore &

McNair Recreation Centers

Ms. Peaches

Little Book Worms

10-11am | K-5th Grade | FREE

October 7th:

The Best Chef in Second Grade

November 4th:

Splat the Cat Gets a Job

December 2nd:

Pete the Cat goes Camping

Registration required.

Pompano Highlands

954-786-7871

Teen Advisory Board

2nd Tuesday | 5:30pm

Ages 13-17

FREE | Register online

Emma Lou Olson Civic Center

954-786-4111

Winter Camp

Dec. 26th-28th

Jan. 2nd - Jan. 5th

Grades K-5 | 7:30am-6pm

\$120/Resident

\$150/Non Resident

Highlands Park

Mitchell/Moore

McNair Center

Emma Lou Olson Civic Center

All events, programs and classes are subject to change. Visit parks.pompanobeachfl.gov for additional information.

CLASSES & PROGRAMS



[SPORTS]

Karate YOUTH

Tues & Thurs | 6:30 - 7:30pm
Ages 5-17 | \$50/Month
Charlotte Burrie Center
954-786-5566

Mon & Thurs | 6:30 - 7:30pm
Ages 5 - 17 | \$50/Month
Emma Lou Olson Civic Center
954-786-4111

Tues & Thurs | 6:30 - 7:30pm
Ages 5-17 | \$50/month or \$8/class
Highlands Recreation Center
954-786-7871

ADULT

Tues & Thurs | 6:30-7:30pm
18 & up \$50/ month
954-786-5566
Charlotte Burrie Center
954-786-5566

Mon & Thurs | 7:30 - 8:30pm
18 & Up | \$50/Month
Emma Lou Olson Civic Center
954-786-4111
7:30-8:30pm
Ages: 18 and older
\$50/Month \$8/Class
Highlands Recreation Center
954-786-7871

Shotokan

Mon | 4 -6pm
Wed | 5:30 -7:30pm
Sat | 12:30 -2:30pm
\$150/month Or \$25/class
Classes available for youth & adult
Herb Skolnick Center
954-638-0270

Pickleball INDOOR PICKLEBALL

Tues & Thurs | 10am - 4pm
18 & up | \$5/Residents
\$10/Non Residents
Open 4 on 4 play.
All levels welcome.
Charlotte Burrie Center
954-786-5566

OPEN PLAY PICKLEBALL

Mon & Wed | 9am - 3pm
18 & Up | \$5/Resident | \$10/Non Resident
Emma Lou Olson Civic Center
954-786-4111

PALM AIRE PICKLEBALL CLUB

Wed-Fri | 2 -7pm
Sunday | 8 -11am
18 & Up | FREE
George Brummer Park
617-922-7810

Pee Wee Soccer

Tues & Thurs | 6-7pm
Ages 3-4
\$25/Resident
\$50/Non Resident
Registration starts: Oct. 2nd
Program Starts: Nov.7- Dec. 12th
North Pompano Park
954-786-7871



[FITNESS & DANCE]

Adult Tap

Tuesdays

12 – 1pm

18+ | \$12/Class

Emma Lou Olson Civic Center

954-786-4111

Ballet, Tap and Jazz

Tues, Wed, Thur

Time Varies

Ages 3 - 17 | Price Varies

\$35 - \$65/Month

Emma Lou Olson Civic Center

954-786-4111

Ballroom Salsa

Mon | 7 - 8 pm

18 & Up | \$10/Class

This program focuses on building dance combinations, integrating movements and timing.

Herb Skolnick Center

786-556-5141

Jazzercise

Mon & Wed | 4:40 – 5:40pm

18+ | \$69/Month

Mon – Thurs | 5:45 -6:45pm

18 & Up | \$69/Month

Emma Lou Olson Civic Center

754-222-6971

Jazzercise Lo

Tues & Thurs | 9:30 – 10:30am

18+ | \$69 a month | \$20/2 Classes

Emma Lou Olson Civic Center

754-222-6971

Line Dancing

Fridays

10 - 11am | Beginners

11am - 12pm | Intermediate

18 & up | \$10

Charlotte Burrie Center

954-786-5566

Oct 10 & 24 | Nov 14 & 28 | Dec 5

6pm | FREE

E. Pat Larkins Center

954-786-4585

All events, programs and classes are subject to change. Visit parks.pompanobeachfl.gov for additional information.



Tai Chi

Wednesdays | 7:30pm
18 & up | \$10/class
Instructor Alex Shipman
Charlotte Burrie Center
954-786-5566

QI GONG

Wednesday 10-11am
18 & up | \$10/class
Herb Skolnick Center
954-786-4590

Yoga

Wednesdays | 6pm
18 & up | \$10/class
Instructor Alex Shipman
Charlotte Burrie Center
954-786-5566

GENTLE

18 & Up | \$10/class
Tue & Thur | 10-11am
Herb Skolnick Center
240-535-5048

ASANA

Mon | 10-11am
Sat | 11am-12pm
18 & up | \$10/class
Herb Skolnick Center
954-786-4590

Zumba

Mon, Tues, Thurs | 7-8pm
18+ | \$55/10 Classes | \$7/class
Emma Lou Olson Civic Center
954-786-4111

Mondays | 7pm

18 & up | \$10/class
Instructor Trimia Allen
Charlotte Burrie Center
954-786-5566

Tue & Thurs | 10-11am

18 & up | \$8/class
Herb Skolnick Center
954-786-4590

[ARTS]

Art with Sheila

Oct. 14th: Boo- Reflect
Nov. 11th: Thankful Hands
Dec. 9th: Let it Snow
10 -11:15am
K-5th Grade | FREE
Light refreshments Served
Pompano Highlands
954-786-7871

Drawing/Art with Anita Orsini

Fridays | 10:30am-1pm

18+ | \$150/ 6 Classes | \$26/ class

Instructor Anita Orsini

Herb Skolnick Center

954-786-4590

Watercolor Art classes

Wednesdays

9:30 -11:30am

\$25/class

Instructor Christine Landis

Charlotte Burrie Center

954-786-5566

[LEISURE]

AARP Defensive Driving

3rd Tuesday

9:30am-4pm

55 & up | \$20 AARP members

\$25 non-members

Charlotte Burrie Center

954-786-5566

AARP Safe Driver Course

4th Tuesday

8am-4:30pm

\$20 AARP members

\$25 non-members

Herb Skolnick Center

888-773-7160

Canasta

Tuesdays | 1- 4pm

18+ | FREE

Emma Lou Olson Civic Center

954-786-4111

LESSONS

Monday | 1:30-3:30pm

18 & Up | \$7/class

Herb Skolnick Center

954-968-1990

Computer & Phone Help

2nd Wednesday | 12 - 2pm

18 & Up | \$20/Class

Do you need help with your phone and/or computer?

Herb Skolnick Center

954-903-4383

Mahjong

Wednesday

9 - 11am

18 + | \$6/Class

Emma Lou Olson Civic Center

954-786-4111

Friday | 9am-11am

18 & Up | \$6/class

Herb Skolnick Center

954-288-2443

Open Card Play

Mon-Fri

12pm- 4:30 pm

18 & Up | FREE

Herb Skolnick Center

Bridge

DUPLICATE BRIDGE

Tue-Thur | 12 -4pm

Saturday 12-4pm

18 & Up | \$10

Herb Skolnick Center

561-441-5882

SUPERVISED BRIDGE

Wednesday | 9-11am

18 & up | \$15/session Intermediate

Herb Skolnick Center

954-786-4590

Pinochle

Mondays | 6 - 9pm

Wednesday | 12 - 3pm

18+ | FREE

Emma Lou Olson Civic Center

954-786-4111

Yarn & Ewe

Tuesday | 10am-1pm

18 & Up | FREE

Herb Skolnick Center

Thursday 2 - 5pm | FREE

Charlotte Burrie Center

Knitting, Crocheting, Weaving
Needle Point, Embroidery, Cross
Stitch and more!

“SOE” Supervisor of Elections Office

Mon - Fri | 9am - 5pm

Available for voter's registration

E. Pat Larkins Center

954-786-4585



JANUARY
20 - 21

Pompano
Community
Park



NAUTICALFLEAMARKET.COM

820 NE 18 Avenue | Pompano Beach | FL 33060

**Smooth
Sounds
soirée**

LIVE music,
FREE family fun,
FOOD trucks,
MERCHANDISE
vendors

NOVEMBER 4 | 6 - 10PM
Hunters Manor Park | 1801 NW 4th Street



INCLUSIVE RECREATION ACTIVITIES



The City of Pompano Beach is committed to accessibility and inclusivity in our community. We recognize the barriers that may overwhelm those who face sensory processing challenges and are here to help. We aim to provide a calming environment for over-stimulated individuals at city-wide events .

Adaptive Tennis Program

Saturdays | Aug19- Sept 23
8am-9am

PAID Tennis Classes:

One payment of \$60 = 6 classes

Pompano Beach Tennis Center

Registration Required

954-786-7841

Kickball

September 14-October 19

Thursdays | 6-8pm | FREE

Individuals 18+ with
developmental disabilities.

Registration required.

demi.rivera@copbfl.com

Edited 15 hours ago

Community Park

Holiday Singo

December 15 | 6:30pm

\$5/*participant*

Individuals with
developmental disabilities

Herb Skolnick

BEACH AND PIER

North Pompano Beach Boulevard
and Atlantic Boulevard
Pompano Beach, FL 33062

Open 365 Days a Year



The public beach is open 365 days a year. Swimming areas guarded 7 days a week from 9 am until 4:45 pm. During daylight savings the guards extend their coverage until 6:45 pm (early March to early September).

Restroom facilities, showers, picnic shelter, tables, barbecue grills, beach wheelchairs, and playground are located on the beach.

The Fisher Family Pier, 222 N Pompano Beach Boulevard, is open from 7 am-10 pm 7 days a week. The Bait Shop offers food, beverages and bait for purchase, as well as rod rentals.

The public beach has two beach wheelchairs which make the beach accessible to our special needs residents and visitors. The beach chairs are available seven days a week on a first-come, first-served basis. For more information go to Ocean Rescue Headquarters (50 N Pompano Beach Blvd) or ask any lifeguard.

Ocean Rescue

Pompano Beach Ocean Rescue is a division of Pompano Beach Fire Rescue. The beach patrol consists of 17 full-time and 35 part-time highly trained men and women who protect swimmers along 1,200 yards of shoreline. All of our ocean lifeguards are certified First Responders or Emergency Medical Technicians who are trained to handle any emergency and are equipped with full basic life support equipment such as AED's and oxygen. Our agency's lifeguard certification is provided through the United States Lifesaving Association. Ocean Rescue lifeguards receive additional training with Pompano Beach Fire Rescue. Our ocean lifeguards also have extensive knowledge of the ocean and beach environment and are always happy to answer questions from the public.

Beach Picnic Pavilions

Pavilions are available for rent by calling the Emma Lou Olson Civic Center 954.786.4111.



Sand Volleyball

Volleyball courts are available on a first-come, first-served basis.

- Alcohol is prohibited on the public beach and in all parks.
- Pets are not allowed on the beach

Beach Conditions

Information is provided daily regarding swimming conditions at Pompano Beach. After 9 am daily, call the telephone number below for a recording describing water and weather conditions as well as the presence of Man O' War or Sea Lice. Daily Report: 954.786.4005

Beach Condition Flags

Green: Low Hazard

Yellow: Medium Hazard

Red: High Hazard

Double Red: . . . Closed to the public

Purple: Dangerous Marine Life

Adopt-A-Beach

Adopt-A-Beach is an environmental program for various age groups promoting cleaner beaches. Organizations or individuals interested in participating in an Adopt-A Beach and/or beach cleanup of Pompano Beach can request information by e-mailing oceanrescue@copbfl.com.

Special Considerations

Boogie boarding is allowed everywhere on the beach, however, surfing is only allowed in designated areas. Wrist or ankle leashes are mandatory. Stand up paddleboards have been interpreted to be the same as surfboards, if inside the vessel exclusion buoys. Launching for stand up paddleboards is north of Lifeguard Tower 6 located on the north side of the municipal pier or south of Lifeguard Tower 3 located at the eastern Atlantic Avenue terminus. No craft shall be operated at a distance closer than 100 yards (300 feet) of the municipal pier. Stand up paddleboarders outside the vessel exclusion buoys are required to wear a life vest Hobie cats, kite boarders, paddle and wind driven vessels can be launched at NE 13 and 16 Streets only and must stay 100 yards off the public beach. Boats (both sail and motor) must also stay 100 yards off the public beach. Vessel exclusion buoys are an added visual reference.

Boat and Jet Ski launching is available at Alsdorf Park on NE 14 Street Causeway and the Intracoastal Waterway. A playground and picnic area is also available at this site.

Pompano Beach is home to 6 Beach Wheelchair Access Points along our shoreline and have two beach wheelchairs available for public use, which make the beach accessible to our special needs residents and visitors!

The beach wheelchairs are available seven days a week at 9am to 7pm during daylight savings and 8am to 5pm the rest of the year. They are available on a first-come, first-served basis and we ask the wheelchairs be returned a half hour prior to closing.

For more information, visit Lifeguard Tower 2 or 7 or call the Visitors Center at 954-786-5570.

POMPANO BEACH AQUATIC CENTER

820 NE 18 Avenue
Pompano Beach, FL 33060

954.786.4128

The Aquatic Center includes an Olympic size pool that is 50-meters by 25-yards with two one-meter spring boards.



Admission Fees

Resident Adult.....	\$2 ⁵⁰
Non Resident Adult.....	\$4 ⁵⁰
Resident Child.....	\$1 ⁷⁵
Non Resident Child.....	\$2 ²⁵

Play by Point Website: This integrated platform allows program participants to keep in touch with current facility operations including lane reservations, water aerobics and regular messaging about the facility's events and operations.
Info: 954.786.4128

Aquatics Club Programs

- Piranhas Swim Team
- Little Star Swim School
- South Florida Water Polo

*For more information call the Aquatics Center.
Lane configuration subject to change based
off the training season and programming
permit.*

AquaFit

Exercise and socialize with our fun and energetic water aerobics classes. Classes are offered several times throughout the week and are posted on our Play By Court website.

Class:

\$4⁰⁰/Residents | \$4⁵⁰/Non Residents

Water Polo

Youth and adult programs. For more information, visit www.visit-southfloridawpc.com

Piranhas Swim Team

Little Stars Swim School.

Info: www.pompanopiranhas.com

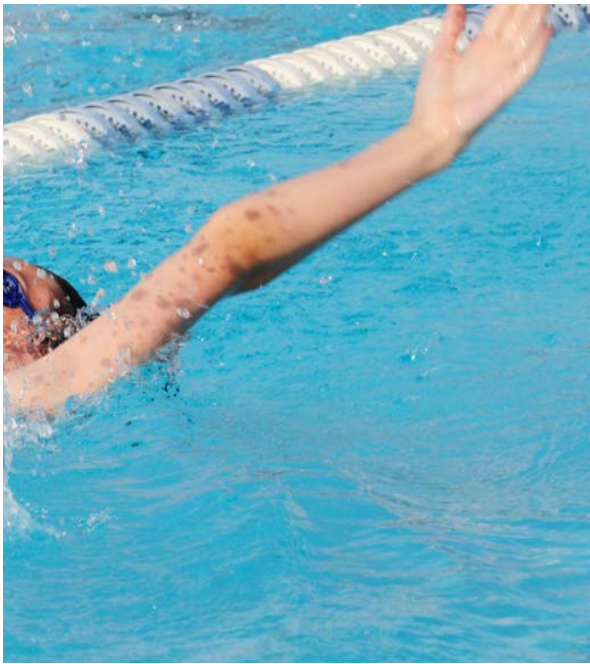
Swim Depot USA

Florida's premiere full service swim shop geared to handle all the needs for any competitive swimmer from the novice to the elite level. Authorized dealer of all major competitive swimwear.

954.515.8689

www.swimdepotusa.com

Located at the Aquatics Center



HOUSTON/ SWORN AQUATIC CENTER

901 NW 10 Street
Pompano Beach, FL 33060

954.786.4116

The Houston/Sworn Aquatic Center offers nine 25-yard lap lanes with two one meter spring boards.



All events, programs and classes are subject to change. Visit parks.pompanobeachfl.gov for additional information.

Admission Fees

Resident Adult.....	\$2 ⁵⁰
Non Resident Adult.....	\$4 ⁵⁰
Resident Child.....	\$1 ⁷⁵
Non Resident Child.....	\$2 ²⁵

Wateraerobics

Resident.....	\$3/class
Non Resident.....	\$25/10 classes
Non Resident.....	\$3 ⁵⁰ /class
Non Resident.....	\$30/10 classes

Info: 954.786.4116.

American Red Cross

American Red Cross Certification and Trainings available.
Info: 954.786.4116

Facility Reservations

Host your child's celebration at the pool.
Info: 954.786.4116

College Teams or Clubs

Looking for training for your team? The Pompano Aquatic Center and Houston/Sworn Aquatic Center will be offering training space for your needs, long course (50 Meter) or short course (25 yards).
Info: 954.786.4128

Houston/Sworn Swim Team

A competitive youth swim team for experienced swimmers. This program focuses on stroke technique, endurance, coordination and fun. New swimmers welcome. Must be able to pass swim test prior to registration. Info: 954.786.4116

Swim Lessons

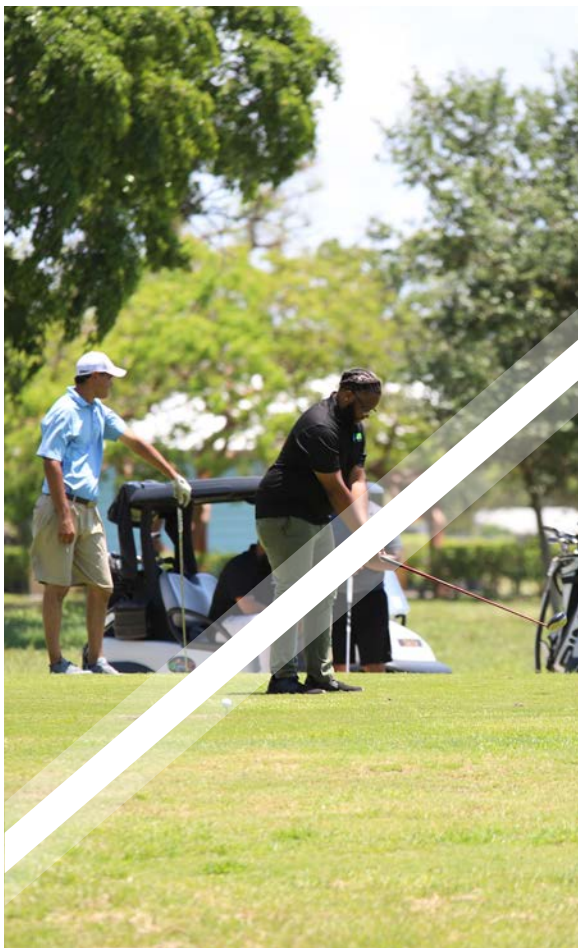
Ages 6 months & up, including adults. Eight 25-45 minutes lessons available on weekday evenings.
Info: 954.786.4116

GOLF COURSE

1101 North Federal Highway
Pompano Beach, FL 33060

954.786.4142

Mon - Sun: 7 am - 6 pm



Pompano's Municipal Golf Courses consist of two 18-hole courses; the Palms and the Pines. The golf courses are conveniently located on North Federal Highway between Atlantic Boulevard and Copans Road, and are easily accessed from I95 and Florida's Turnpike.

The Golf Shop and Golf Course Restaurant & Lounge are open to the public as well as members and guests.

Owned and operated by the City of Pompano Beach, our Golf Courses cater to the daily and, annual play, charity, corporate events, and junior groups. Schedule a tee-time at parks.pompanobeachfl.gov.

Drive Range Hours

April 14 - November 19
Mon-Tue, Thu-Sat: 6:30 am-Dark
Wed & Sun: 6:30 am - 4:30 pm

Range Balls

Small Basket \$4 | Large Basket \$6
\$30/10 tokens and get 1 token free
Range tokens are available for purchase in the Golf Shop.

Push/Pull Cart Rentals

\$3.50/per 18 Hole Round
\$30/10 tokens and get 1 token free

Private Golf Instruction

All Ages Individual Sessions, Lesson Series, and On-Course Playing Lessons are available by appointment by calling 954.781.0426.



Annual Memberships

Resident (Single)

\$800/Palms | \$1,400/Pines & Palms

Resident (2 person Family)

\$1,100/Palms | 1,800/Pines & Palms

Non Resident (Single)

\$1,000/Palms | \$1,600/Pines & Palms

Non Resident (2 person Family)

\$1,400/Palms | \$2,200/Pines & Palms

Rates

(APRIL 5-NOV 19)

All rates are subject to change. All rates include tax.

****Pines Course is temporarily closed due to re-grassing.**

Before 1pm:

9 Holes w/Golf Cart \$21 Palms

18 Holes Walking \$16 Palms

18 Holes w/Golf Cart \$26 Palms

1pm - 4pm:

9 Holes w/Golf Cart \$18 Palms

18 Holes Walking \$16 Palms

18 Holes w/Golf Cart \$21 Palms

After 4pm:

9 Holes w/Golf Cart \$15 Palms

18 Holes Walking \$13 Palms

18 Holes w/Golf Cart \$19 Palms

Annual Members

9 Holes Walking \$8.5 Palms

9 Holes w/Golf Cart \$10 Palms

18 Holes Walking \$10 Palms

18 Holes w/Golf Cart \$20 Palms

Push/Pull Cart Rental:

\$3.50 per 18 Hole round

Tee-Times: www.pompanobeachfl.gov

phone: 954.944.5982

All prices are per person and include tax

PRICES SUBJECT TO CHANGE

Adult Group Golf Instruction

All prices include use of facility during session/range balls.

Men & Women

Sat | 11:30 am - 12:30 pm

\$20/person

Ladies Only

Mon | 9 am - 10 am | \$15/person

Junior Golf Programs

Ages: 5-14 | Tuesday

4 pm - 5 pm | \$15

Ages: 5-9 | Saturday

9 am - 10 am | \$10

Ages: 10-14 | Saturday

10:15 am - 11:30 am | \$15

All prices include use of facility during session/range balls.

Member Daily Rates

All rates are subject to change. All rates include tax. Members may reserve tee-times up to 2-weeks in advance of play. Memberships are valid 365 days from purchase.

\$8.⁵⁰/Palms | 9 holes/walking

\$10/Palms | 9 holes w/cart

\$10/Palms | 18 holes/walking

\$20/Palms & Pines | 18 holes w/cart

CANINE CORNER DOG PARK

1101 North Federal Highway,
Pompano Beach, FL 33060

954.786.4574 | Hotline 954.786.4111
6:30am-8pm Daily
Closed Tuesdays for maintenance



Canine Corner Dog Park features 2.6 acres of doggie heaven with two dog guzzlers (fountains), three pet stations with dispenser and bags, benches, sidewalks and plenty of trees for...sniffing. The park has two sections; one for large dogs 25 pounds and over and one for small dogs less than 25 pounds. The hours of the park will be from sunrise to sunset.

The park also has an entry area where dogs can be leashed and unleashed prior to entering the main areas.

Canine Corner is a self policing park. That means that patrons need to be exceptionally courteous by immediately picking up after their dog, keeping aggressive dogs at home and paying close attention to their dog while it is in the park. Responsible dog owners make an off-leash park a fun place to let their dogs run and play with other dogs. It's very important, however, to keep a close eye on your dog. Even the friendliest dogs can become a nuisance to other patrons by jumping on them. Personality clashes between pets can result in injuries. Park rules are clearly posted and the Animal Control Division patrols and responds to complaints.

Animal Control is pleased to have a place to send those who want to let their dogs run off leash. We will aim to help keep the park a safe and enjoyable place for responsible dog owners.

You can register for the dog park at the Aquatics Center, located at 820 NE 18 Avenue. Dog Park membership types are listed below. For more information regarding Dog Park memberships, etc., please call 954.786.4111.

For more information and to read about Canine Corner's Dog Park rules, please visit parks.pompanobeachfl.gov.

Required Documents

- Proof of Residency
(Recent Utility Bill & Picture ID)
- Copy of current rabies certificate
(Metal tag alone is not sufficient)
- Picture of the Dog
(Printed or on Phone)

Memberships

Annual
Resident:..... \$30/dog
..... \$5/additional dog
Non Resident: \$60/dog
..... \$5/additional dog

6 Month
Resident:..... \$20/dog
..... \$5/additional dog
Non Resident: \$40/dog
..... \$5/additional dog

Weekly
Resident:..... \$10/dog
Non Resident: \$20/dog

Daily
Resident:..... \$5/dog
Non Resident: \$10/dog

Nestled in the emerald green surroundings of Community Park, the Municipal Tennis Center offers 16 lighted professional fast-dry clay courts for day and night play. With a fully-equipped pro shop USPTA Professional, Eddie Sposa and staff offers a wide variety of private and group lessons for all levels of play. Info: 954.786.4115
Tennis Courts (hard) are available at no charge from sunrise to sunset throughout the City on a first-come, first-served basis. Limit court time to one hour if others are waiting.

Rainout Line

Check the status of a game, field or event by calling 954.204.0126.

Memberships

16 lit clay court membership based tennis facility.

Resident Child:\$100
Non Resident Child:\$150
Resident Adult:\$300
Non Resident Adult:\$480
Resident Family:\$480
Non Resident Family:\$650
Resident Couple:\$425

(living together)

Non Resident Couple:\$660
----------------------	------------

(living together)

Daily Rates

Resident Adult:\$7. ⁵⁰
Resident Child:\$3. ⁷⁵
Non Resident Adult:\$10. ⁰⁰
Non Resident Child:\$7. ⁰⁰
Liveball Clinic:\$20. ⁰⁰
Light Fee:\$3. ⁰⁰

Private Tennis Lessons

30 Minutes:\$40
60 Minutes:\$66
60 Minutes Shared:\$25/person
90 Minutes:\$100
90 Minutes Shared:\$30/person

Pee Wee Tennis

4 - 6 Mon & Wed 4 pm - 5 pm	
1-day Week:\$60/month
2-days Week:\$120/month
954.786.4115	

Jr Tennis

7 & Up Mon & Wed 5 pm - 6:30 pm	
1-day Week:\$72/month
2-days Week:\$144/month
954.786.4115	

Jr. Tennis Academy

Tuesday, Thursday 4-6pm
Friday is match play 4-6pm
\$30/1 day | \$60/2 day | \$90/3day
all are per week.

Adult Liveball (Int.)

18 & Up | Mon & Wed
6:30 pm - 8 pm | \$20/day

18 & Up | Saturday | \$20/day
8 am - 9:30 am OR 9:30 am - 11 am
Intermediate Level.

Adult Liveball (Adv.)

18 & Up | Tue & Thu
6:30 pm - 8 pm | \$20/day
Advanced Level.
18 & Up | Saturday
11 am - 12:30 pm | \$20/day

Adult Liveball (mixed)

18 & Up | Friday
10:30 am - 12 pm | \$20/class
Mixed Levels.

Pickleball Lessons

30 Minute Private:\$40
60 Minute Private:\$70
60 Minute 2-Person:\$85
60 Minute Clinic:\$20/person
90 Minute Private:\$105
90 Minute 2-Person:\$130
90 Minute Clinic:\$30/person

TENNIS CENTER

920 NE 18 Avenue
Pompano Beach, FL 33060

954.786.4115

Monday - Thursday: 7:30am - 9:00pm

Friday: 7:30am - 6:30pm

Saturday - Sunday: 7:30am - 3pm



2nd FRIDAY of the MONTH

Pompano Beach Great Lawn

7-9pm

MUSIC UNDER —the— STARS

2023

SEPT 8

OCT 13

NOV 10

DEC 8

2024

JAN 12

FEB 9

MARCH 8

APRIL 12

MAY 10

*Holiday
Special*

TREE LIGHTING
DECEMBER 8



FOR DETAILS ON
ENTERTAINMENT,
SCAN THE CODE!



Air Park Jogging Track - 4.4 Miles
(Asphalt Track) 1001 NE 10th Street

Alsdorf Park - 10 Ac.
2974 NE 14 St

Annie Adderly Gillis Park - 0.8 Ac.
601 Dr MLK, jr Blvd

Apollo Park - 4.4 Ac.
1580 NW 3 Ave

Aquatic Center - 0.2 Ac.
820 NE 18 Ave | 954.786.4128

Avondale Park
225 SW 6 Ave

Baseball Complex - 28 Ac.
1700 NE 8 St | 954.786.4119

Bill Keith Park
220 E Atlantic Blvd

Canine Corner Dog Park - 2.6 Ac.
1101 N Fed Hwy | 954.786.4574

Centennial Park
450 NE 10 St | 954.214.4759

Charlotte Burrie C.C. 0.2 Ac.
2669 N Fed Hwy | 954.786.5566

Cresthaven Park - 1.5 Ac.
1320 NE 27 Ct

Coleman Park - 0.5 Ac.
480 NW 7 Terr

E. Pat Larkins Center C.C. - 2.9 Ac.
520 Dr MLK, jr Blvd | 954.786.4585

Emma Lou Olson C.C. - 5.5 Ac.
1801 NE 6 St | 954.786.4111

Exchange Club Park - 7.5 Ac.
2800 NE 24 St

Fairview Park - 2.4 Ac.
801 SW 8 St

Fisher Family Pier
222 N Pompano Beach Blvd

Founders Park - 1.6 Ac.
316 NE 3 St

Golf Course - 340 Ac.
1101 N Fed Hwy | 945.786.4142

Harbor's Edge Park - 8.5 Ac
1240 NE 28 Ave

Herb Skolnick Civic Center- 3.5 Ac.
800 SW 36 Ave | 954.786.4590

Highlands Park R.C. - 3.3 Ac.
1650 NE 50 Ct | 954.786.7871

Houston/Sworn Aquatic Center
901 NW 10 St | 954.786.4116

Hunters Manor Park - 8.3 Ac.
1801 NW 4 St

George Brummer Park - 5.0 Ac.
3500 W Palm Aire Dr | 954.786.4590

Indian Mound Park - 1.0 Ac.
1232 Hibiscus Ave

Jackson Park - 1.8 Ac.
301 NW 15 St

Kendall Lakes Park - 0.2 Ac.
1650 NW 3 Ave

Kester Park - 8.4 Ac.
702 NE 6 St | 954.786.4119

Lake Santa Barbara - 0.2 Ac.
2290 SE 7 Dr

Lovely Park - 0.2 Ac.
1941 NE 1 Ave

McNair Park Fitness Center

Mon - Fri | 7am - 11am
Mon - Fri | 4pm - 8pm
Sat | 7am - 6pm

ANNUAL MEMBERSHIP

\$100/ Resident

\$250/ Non Resident

DAILY VISIT

\$10/ Resident

\$15/ Non Resident

954-786-7882

951 NW 27th Ave

PARKS AND FACILITIES

Marine Drive Park - .1 Ac.

1751 N Riverside Dr

McNab Park - 2.5 Ac.

2250 E Atlantic Blvd | 954.786.4111

McNair Park & R.C. - 6.4 Ac.

951 NW 27 Ave | 954.786.7882

Mitchell/Moore Park & R.C. - 15.8 Ac.

901 NW 10 St | 954.786.4131

Northeast 16 Street Park - 0.6 Ac.

NE 16 St - At Intracoastal

North Pompano Park - 20.4 Ac.

4400 NE 18 Ave | 954.786.4091

North Ocean Park - 2 Ac.

3424 NE 16 St

Novelty Park - 2 Ac.

351 NW 14 St

Pompano Community Park - 1.0 Ac.

2001 NE 10 St | 954.786.4119

Public Beach - 26.8 Ac.

10 Pompano Beach Blvd | 954.786.4005

Roy L. Rogers Park/

Lighthouse Museum - 2.3 Ac.

2700 North Ocean Blvd

Sanders Park - 1.8 Ac.

1599 NW 3 Ter

Sand & Spurs Equestrian - 11.5 Ac.

1600 NE 5 Ave | 954.295.9047

Sandspur Park - 2.3 Ac.

4231 NE 15 Ave

Scott Winters Memorial Park - 0.2 Ac.

1199 N Riverside Dr

Senior Activity Center

2005 NW 9th Street | 954.786.7040

Southeast 13 Street Park - 0.1 Ac.

2700 SE 13 St/Park At Intracoastal

Southeast 15 Street Park - 0.1 Ac.

2800 SE 15 St/Park At Intracoastal

Sgt. Chris Reyka Park - 0.4 Ac.

2198 N Riverside Dr

Sgt. Kip A. Jacoby Park - 5.4 Ac.

620 S Cypress Rd

Tennis Center - 3 Ac.

920 NE 18 Ave | 954.786.4115

Weaver Park Canal Point - South

799 NW 16th Place

Weaver Park Liberty Park - North

799 NW 19th Street

Youth Sports Complex - 10 acres

700 NE 10th Street | 954.786.4119



All events, programs and classes are subject to change. Visit parks.pompanobeachfl.gov for additional information.



Boo Bash

OCT 27 | 5-9 PM | FREE
COMMUNITY PARK

HAUNTED MAZE | COSTUME CONTEST | CARNIVAL RIDES | PHOTO BOOTH
CHARACTERS | GAMES | FORTUNE TELLER | LOCAL SUPER HERO TRICK OR TREAT

MEET OUR FIRST RESPONDERS

First Responder Day is a community-building event that promotes first responders-community partnerships and neighborhood camaraderie to make our neighborhoods safer, more caring places to live.












POMPANO BEACH



Yuletide
on Atlantic

DECEMBER 7
6:30 PM | FREE



**FOOD TRUCKS, DJ,
BACKYARD GAMES**

**Food Truck
FRENZY**
#COME HUNGRY

JOIN US FOR A NEW SEASON
of FOOD, FUN, & MUSIC
FRIDAYS | 6-10PM

SEPT 22	DEC 22	MARCH 22
OCT 20	JAN 26	APRIL 26
NOV 17	FEB 23	MAY 24

SAMPLE MCDUGALD HOUSE | 450 NE 10TH ST.



**DRONE SHOW
EXTRAVAGANZA**

NOVEMBER 11

**pompano
beach**

Drone Show Times | 7 & 9pm
Live Music | 5:30pm
Fisher Family Pier



**INTRODUCING
MCNAIR PARK
FITNESS CENTER**

**ANNUAL
MEMBERSHIP**
\$100/Resident
\$250/Non Resident
DAILY VISIT
\$10/Resident
\$15/Non Resident
954-786-7882



POMPANO BEACH

CARIBBEAN 2023 fest

OCT 14 | 5-10PM | FREE

COMMUNITY PARK | 1801 NE 6TH STREET

REP YOUR FLAG

SOGA • DANCEHALL • REGGAE • KOMPA